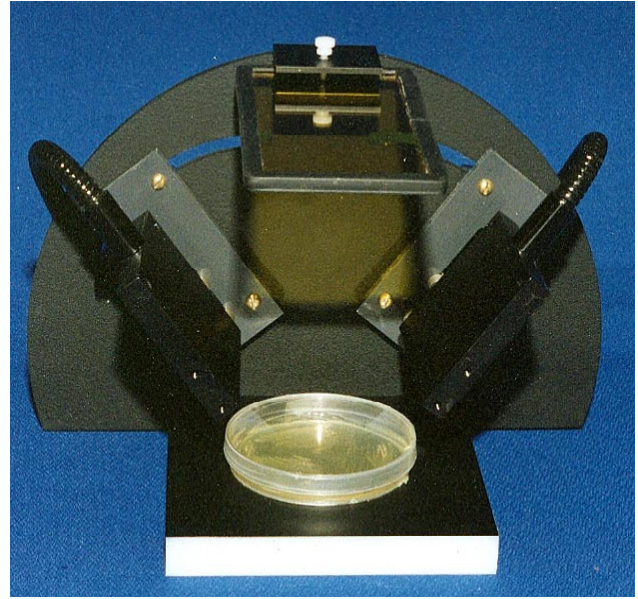


Illumatool Bright Light System

MODEL LT-9900

The **Illumatool Bright Light System** is based on the LT-9500 Illumatool TLS. The LT-9900 uses an advance in optical design to produce 50% plus more light at the sample. The LT-9900 looks like the LT-9500 from the outside but inside the optics have been redesigned to produce brighter excitation energy at the sample. This improvement was engineered so the filter sets that fit the LT-9500 and LT-9800 fit the LT-9900. Like the LT-9500 it is designed to supply a very bright visible light source for excitation of fluorescent samples with none of the unsafe and sample damaging ultra-violet radiation. A single light source is divided into two equal epi lights, which are placed above and to the side of the sample (see Figure to right). The result is a strong excitation signal that has little optical noise. The epi configuration produces the best fluorescent sensitivity, and is recommended for most applications. The following is a sample of the dyes that have been tested: SYBR Green I stain, SYPRO Orange I stain, Ethidium Bromide, red fluorescent protein (RFP), and green fluorescent protein (GFP). Illumatool's flexibility allows researchers to work with a wide range of samples from fluorescent gels, living mice, culture dishes to 96 well plates. Standard features include variable illumination control 0-100%, wavelength selection between 390 nm - 750 nm or 100% white light.



LT-9900 Illumatool Bright Light System Epi is Projecting 470nm light onto a GFP plate.

Model LT-9900 comes complete for viewing GFP or RFP samples. The system includes lamp, power supply, dual Epi lighting, adjustable stand, and black and white backgrounds, a EGFP filter set 470nm excitation filter and 515nm viewing filter or RFP filter set 540nm excitation filter and 590nm viewing filter.

Accessories :

LT-9470FX-- 470nm in Lightools Filter Cup	\$245.00
LT-9RFPFX--540nm in Lightools Filter Cup	\$245.00
LT-9GFPVG--GFP viewing glass	\$225.00
LT-9RFPVG--RFP viewing glass	\$225.00

See price list for additional filter sets.

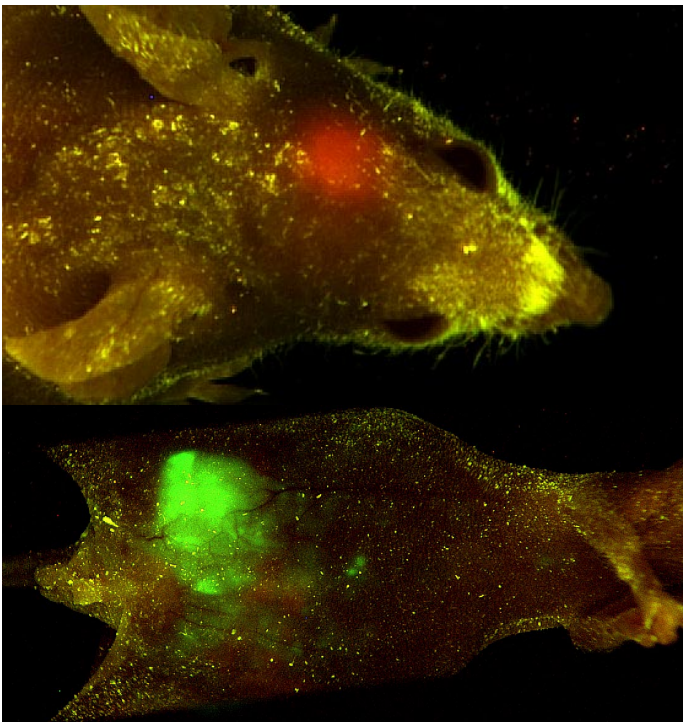
LT-9900 Illumatool BLS 120 volt	\$2,995.00
LT-9900-220 Illumatool BLS 220 volt	\$3,095.00

Specification subject to change without notice



LIGHTTOOLS RESEARCH

684 Poinsettia Park South
Encinitas, CA 92024
Phone 760-632-0677
FAX 760-632-0778
WEB: www.lightools.com
E-Mail: ltr@lightools.com



Top image RFP-tumor in brain nude mouse. Bottom GFP-tumor growing on colon. Both whole body images recorded with the Macro-Imaging system. Excitation light provided by the Illumatool. Courtesy of AntiCancer, Inc.